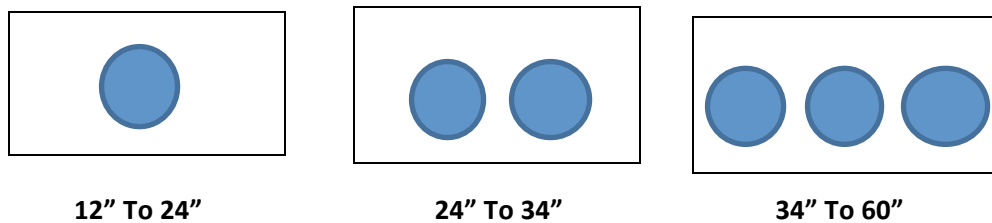


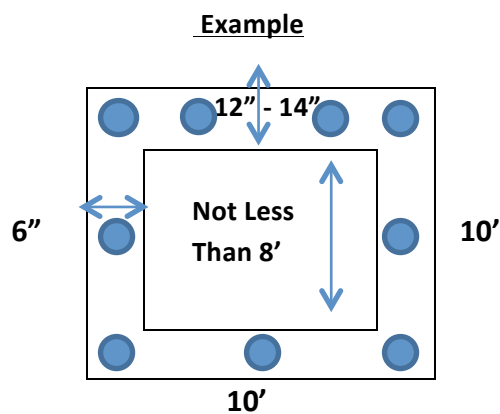
CURBING AND MONUMENT FOUNDATION REQUIREMENTS

- All foundations and curbings are to be framed and wet poured. The Cemetery Manager is to inspect framework before concrete is poured.
- **Monument Foundations:** All rebar is to be a minimum of 3/8" diameter, with two (2) rebar in each pier hole connected to the foundation or curbing rebar.
- Concrete will be a minimum of 4" thickness for monuments 12" to 24" in length, and 6" thickness for monuments 24" to 60" in length.
- Pier holes minimum of 24" in depth.
- For large monuments the number and size of pier holes and thickness of concrete foundation to be determined by Cemetery Manager.

Pier Hole Diagram Example



- **Curbing:** Minimum of 6" thickness on all sides and height not to exceed 2-3" above ground level. Width on sides and foot end to be a minimum of 6", with the head end to be determined by the width of the monument. Pier holes are to be on 36" centers. Rebar spacing at the monument end to be on 6" centers, sides and foot end to have two (2) 3/8" rebar connected to pier hole rebar. On all curbing, the inside measurement between the head and foot end must not be less than 8' as to allow for installation of a grave vault.



Please allow five (5) business days notice before commencing work. The Morton Cemetery Association and/or Morton Cemetery Manager reserve the right to change or amend requirements on a case by case basis.